

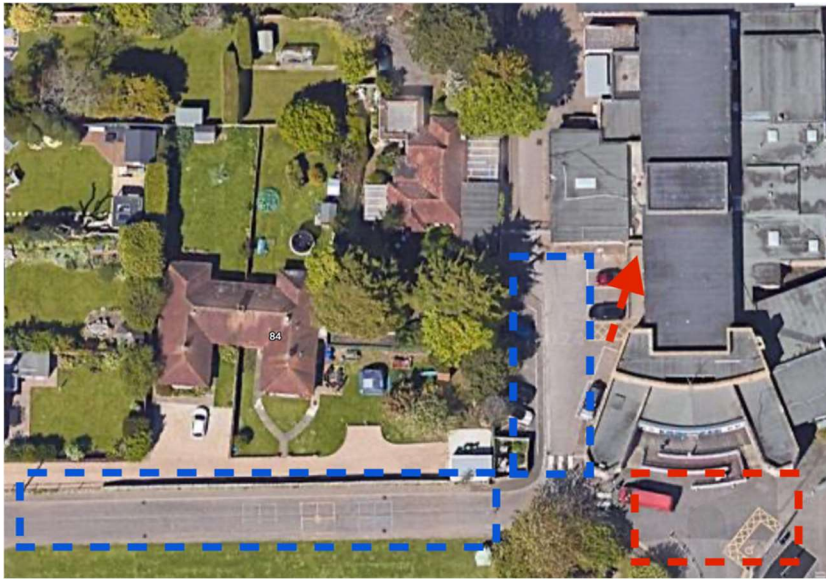


# Adur Model Car Club: Indoor Series 2024/25

## General Housekeeping Rules.

Address.

**Thomas A Becket Junior School  
Glebeside Avenue  
Worthing  
West Sussex  
BN14 7PR**



### **Map.**

Blue Grids – Parking  
Red Arrow – Entrance Door.  
Red Grid – No parking.

## General Information and Rules

### Off Track Information and rules.

- Tables will be provided, Will need to bring a chair.
- Do not roam around the school, stay within the hall and the hallways that join to the school hall.
- In an event of a fire or an alarm sounding please report to the main school playground.
- No smoking within the school grounds.
- Toilets will be available but please leave them in the condition you found them.
- No rubbish left in the hall or hallways, please take this home.
- Doors will open at 8am, do not wait around the surrounding roads before this time.

### On track information and rules.

- Spider blue additive to only be used. Nothing else.
- 5 drivers per heat.
- Marshall after your race, around the outside of the track.
- 4 x 5-minute qualifiers and 1 x 5-minute final for all.
- Do not leave the rostrum if your car has broken and you can't complete the race. Please wait until the race has finished.